

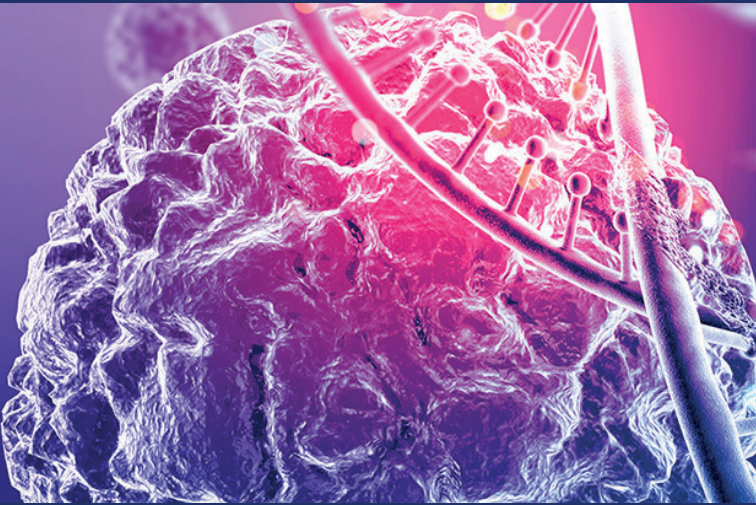
WITH THE SUPPORT OF



FONDAZIONE
FRIULI



THE UNIVERSITY OF TEXAS
MDAnderson
~~Cancer~~ Center
Making Cancer History®



1ST

CRO-AVIANO
MD ANDERSON
SYMPOSIUM
ON PRECISION
ONCOLOGY

SCIENTIFIC COORDINATORS

Gustavo Baldassarre

Centro di Riferimento Oncologico, CRO Aviano, IRCCS, Italy

Silvia Franceschi

Centro di Riferimento Oncologico, CRO Aviano, IRCCS, Italy

FACULTY

UNIVERSITY OF TEXAS

MD ANDERSON CANCER CENTER, HOUSTON, TX

Giulio Draetta

Senior Vice President and Chief Scientific Officer,
Sewell Family Chair of Department of Genomic Medicine

Raghu Kalluri

Director of The Office for Training and Mentoring of Scientists,
Chair of the Department of Cancer Biology

CENTRO DI RIFERIMENTO ONCOLOGICO

CRO AVIANO, IRCCS, IT

Gustavo Baldassarre

Vincenzo Canzonieri

Silvia Franceschi

Valter Gattei

Lorenzo Gerratana

Roberta Maestro

Maurizio Mascarin

Samuele Massarut

Maurizio Polano

Diego Serraino

Agostino Steffan

Giuseppe Toffoli



A V I A N O
NOVEMBER 29TH
2 0 2 2

AULA M. TROVÒ

Centro di Riferimento Oncologico, Cro Aviano, IRCCS, Italy

- 09.00 - 09.30** Registration
- 09.30 - 11.00** Openings
- Saluti e presentazione iniziativa
Welcome and program presentation
FRANCESCA TOSOLINI, CRO AVIANO
- Scopo dell'iniziativa
Aims of the Initiative
BRUNO MALATTIA, FONDAZIONE FRIULI
- La ricerca al CRO-Aviano
CRO-Aviano research portfolio
SILVIA FRANCESCHI, CRO AVIANO
- La ricerca al MD Anderson
MD Anderson research portfolio
GIULIO DRAETTA, MD ANDERSON
- Programma di collaborazione MDA-CRO
The MDA-CRO Collaboration program
RAGHU KALLURI, MD ANDERSON
- SALUTO AUTORITÀ
- 11.00 - 11.30** Coffee Break

Ongoing Research at MD Anderson

CHAIRS: ROBERTA MAESTRO, VALTER GATTEI

- 11.30 - 12.15** Targeting Medium Chain Acyl-CoA Dehydrogenase in Glioblastoma
GIULIO DRAETTA
- 12.15 - 13.00** Tissue Damage Response/Regeneration and Tumor Ecosystem Determines Malignant Progression of Cancer
RAGHU KALLURI
- 13.00 - 13.20** Epigenomic regulation of ovarian cancer resistance to therapies
GUSTAVO BALDASSARRE
- 13.20 - 14.30** Lunch

Ongoing Research at CRO-Aviano

CHAIRS: AGOSTINO STEFFAN, GUSTAVO BALDASSARRE

- 14.30 - 14.50** The epidemiology of cancer in Italy
DIEGO SERRAINO
- 14.50 - 15.10** The Breast Unit translational research program
SAMUELE MASSARUT
- 15.10 - 15.30** Innovation in Radiotherapy
- 15.50 - 16.20** Coffee Break
- 16.20 - 16.50** CLL @ CRO:
a clinical & experimental approach
VALTER GATTEI
- 16.50 - 17.10** Molecular characterization of glioblastomas for personalized therapy: the experience of a multidisciplinary approach in the Friuli Venezia Giulia region
GIUSEPPE TOFFOLI, MAURIZIO POLANO
- 17.10 - 17.30** The CRO-Biobank, opportunity for translational research
VINCENZO CANZONIERI
- 17.30** Discussion and concluding remarks
GIULIO DRAETTA, RAGHU KALLURI,
SILVIA FRANCESCHI, GUSTAVO BALDASSARRE

